

THE  
**LITTLE CORNARD**  
MAGAZINE



Christmas 2021



## **SERVICES at ALL SAINTS**

Currently services are held on the  
2nd and 4th Sundays of each month at 10.30 a.m.

**19th December Carol Service at 6.30 p.m.**

**25th December Family Communion at 10.30 a.m.**

**No service on Sunday 26th December**

**Updates will be posted on the church website  
[www.littlecornardchurch.org.uk](http://www.littlecornardchurch.org.uk)**

---

## **From All Saints Registers**

### **BAPTISM**

Oliver William Timmis

### **FUNERALS**

Derek Leonard Glover  
Raymond Phillip Schwind

### **BURIAL OF ASHES**

Peggy Eileen Minns  
Eric John Gavin

### **MARRIAGE**

Victoria Apter and Thomas Leeder

# **Christmas Letter from Reverend Simon White**

Dear Friends,

For many, the Christian year starts on 28th November with the season of Advent which is a time of waiting and preparing for the coming of Jesus. A time for reflection in darkness, for renewal of hope and for a movement towards a new beginning. Christmas day on 25th December may be the best-known date in the Christian calendar but we are encouraged to start preparing early. Yes, there's shopping to be bought and celebrations to be planned but I hope you will be able to spend time in the weeks leading up to the big day thinking about what is at the heart of Christmas.

Last year many of us experienced a Christmas without many of the traditional ways we mark the season. Carol services and nativity plays either didn't happen or were very different as we tried to keep each other safe. Christmas is a time for meeting up with relatives and friends and lots of those get-togethers weren't possible in the way we would have wished.

This year we hope and pray that many of the familiar experiences that help Christmas come alive return to our homes, our church and our community. But whatever else December brings, it will offer us an opportunity to enter more deeply into the joyful mystery that lies at its heart: God becoming human in the birth of Jesus Christ.

Little Cornard church is preparing for many of the events that traditionally happen. All are invited to come along to the Carol Service at 6:30pm on Sunday 19th and then again at 10:30am on Christmas Day for a Service when we can sing and share the message of joy that Jesus brings to the world.

I hope these Advent and then Christmas seasons are everything you need them to be. The road to recovery from the pandemic has been long and none of us know exactly how December this year will be. Many will be hoping to get a booster jab and there may be other new things and changes we need to think about but please be reassured that although we celebrate Jesus' earthly birth on Christmas Day, "Jesus is the same yesterday, today and forever."

I hope you have a very Happy Christmas.

Best wishes,

*Simon*

**At the heart  
of Christmas**



## Churchwarden's Corner

It was with great sadness that we heard that Peter Cutmore had died. Peter was a great champion for Little Cornard especially on the Parish Council and the PCC. He was for many years our PCC treasurer and with him in charge of the books you could be sure that the Diocese would never get a penny more than they were due – and Peter's opinion of what they were due didn't always tally with the Bishop's! He was a great countryman and could often be found out pigeon shooting with a well behaved dog at his side. He will be greatly missed and our thoughts and prayers go out to Doris, Sue, Rachel and all the family.

The Harvest magazine was Steve's last one before his retirement. We'd like to thank Steve, Mary and all the clergy team for their tireless support during lockdown. There was a constant round of phone calls to anyone who was interested, Zoom chats and online services. The online services were so popular that they are being continued even though regular services are now happening.


Until a new vicar is appointed we are only having services on the second and fourth Sundays at Little Cornard. This will not affect the Carol Service or the Christmas Day service which will go on as normal.

We would like to give a massive thanks to everyone who made the Harvest Fair weekend so successful, over four thousand pounds was raised towards the tower repairs. It was not just due to church members, we got a lot of help from our Parish Councillors as well as from people from Assington and Newton. Paul Baker was the coordinator of it all - and I think he has got a job for life now. There were too many things going on to list but the dog show was a success on Saturday and the vintage cars were a great success on Sunday. I would like to thank the Wheldons for allowing us extra space for the car parking, have-a-go clay shooting and the tractor driving which along with the good weather contributed to a very popular weekend.

The candlelit Carol Service is on Sunday December 19th. It will be followed by mulled wine and mince pies, everyone is welcome.


Best wishes for Christmas and let's hope that 2022 is peaceful.

*Jeremy and Brenda*



# POTTY ABOUT PLANTS?

Visit our garden centre  
and coffee shop  
in Sudbury

  
**Perrywood**  
[www.perrywoodsudbury.co.uk](http://www.perrywoodsudbury.co.uk)



**Gerry Bird**  
Consultants Ltd

**01787 227 210**

**Chartered Building Surveying services  
for Home Purchase Surveys**

**Architectural Services for  
Extensions and Refurbishments**

**Repair Schemes and General Property Advice**

We are Royal Institution of Chartered Surveyors  
and Chartered Institute of Building qualified  
with over 40 years' experience in the Suffolk and Essex areas

2021



On the  
LAST FRIDAY  
of each  
month

# SUDBURY

## FARMERS MARKET

9.30AM – 2PM  
MARKET HILL  
SUDBURY  
CO10 2EH



Jan 29th  
Feb 26th  
Mar 26th  
Apr 30th  
May 28th  
Jun 25th  
Jul 30th  
Aug 27th  
Sep 24th  
Oct 29th  
Nov 19th

(third Friday)

Dec 17th  
(third Friday)

[WWW.SUFFOLKMARKETEVENTS.CO.UK](http://WWW.SUFFOLKMARKETEVENTS.CO.UK)

E: [JUSTINE@SUFFOLKMARKETEVENTS.CO.UK](mailto:JUSTINE@SUFFOLKMARKETEVENTS.CO.UK)

T: 07704 627973

PROUDLY SPONSORED BY STEED & STEED

SOLICITORS



---

## Peter Cutmore

On 1st November we heard the sad news of the passing of Peter Cutmore. Peter lived in Chapel Lane with his beloved wife Doris.

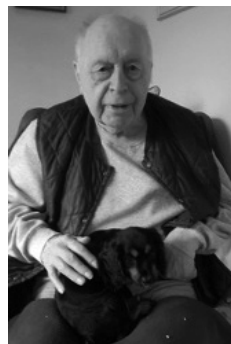
Peter was a buildings inspector for the council. As a young man he lived at Lismore, now called Ivy House, in Bures Road.

Peter first served on the Parish Council as Clerk followed by many years as a Councillor. For such a straight talking gent Peter was often quite restrained at those meetings... Clive greatly valued Peter's considerations at Parish Council meetings over the many years they served together. Peter also served on the PCC and was involved in many other aspects of village life.

Karen would visit with her dogs, as did many neighbours, and the biscuits would come out for the dogs at his demand. Karen's dogs would have found their own way to Peter's home from the Bures Road if she let them off the leash. The picture above right shows Peter with a four legged visitor on his first biscuit scrounging trip to the Cutmores.

Our thoughts are with Doris, daughters Sue and Rachel and the wider family at this sad time.

*Clive Johnson and Karen Gilbert.*



---

## Thank You from Rev Stephen Morley

Dear Friends

Angela and I would like to say a huge "thank you" for all the many kind and thoughtful messages, cards and gifts we received to mark my retirement and for the incredibly generous 'farewell' cheque from the benefice. We were overwhelmed by your kindness.

We are also grateful to God for the opportunity to minister among such a lovely bunch of people and for the precious friendships with which we have been blessed along the way. We have many happy memories of the benefice which will always be a little patch of Suffolk very close to our hearts.

If anyone should ever be passing this way on a visit to the West Country, we would be glad to hear from you. My email and mobile phone numbers remain as before.

With blessings and best wishes

Steve.

Lawyers for life

**Bates Wells  
& Braithwaite**



Solicitors advising on:

- Accident Claims/Personal Injury
- Agriculture and Rural Business
- Children
- Commercial and Company Law
- Commercial/Business Disputes
- Debt Recovery
- Employment
- Estates, Trusts and Wills
- Family
- Litigation/Dispute Resolution
- Matrimonial
- Residential Property



Bates Wells & Braithwaite Limited  
27 Friars Street Sudbury Suffolk CO10 2AD  
T: 01787 880440 F: 01787 880488  
[www.bwblegal.com](http://www.bwblegal.com)



---

## Neighbourhood Plan & National Grid Proposal

Approaching winter, the two issues that I am involved with are moving forward. Our Little Cornard Neighbourhood Plan has now been adopted by the Parish Council and sent to Babergh for scrutiny. Once we receive comments from Babergh we can formally consult residents and interested parties on the revised document. Finally, our plan goes to the independent inspector for approval. The plan represents the wishes of residents and will have to be taken into account when any planning or environmental proposals are considered. The plan can be accessed on the Parish Council website.

The second issue is the National Grid proposal to route an additional set of high voltage transmission lines through Little Cornard. There are a number of questions raised by this proposal and it is important to recognise varying opinions held by residents.

The first question is whether there are alternative routes for transmitting the electricity generated off the east coast. There is clearly an opportunity to reduce on land transmission by developing an undersea ring main but at some point, it has to come ashore to reach consumers.

The second question is that if additional transmission lines are approved, can they be undergrounded rather than having more unsightly pylons? The responses to the Neighbourhood Plan questionnaire demonstrated strongly that residents wish to protect our magnificent landscape and would prefer undergrounding.

The current National Grid proposal is to underground the section through Little Cornard, although the final decision will depend on funding. There will be more consultation before a final decision is made. I understand National Grid are currently initiating surveys and possible compulsory purchase of land.

I would ask that you consider the issues and express your opinions to your MP, councillors and National Grid when opportunities arise. I am not an expert but happy to discuss the proposals and would appreciate any new information. The Stour Valley Underground website provides more detailed up to date information.

Best wishes for a Happy Christmas,  
*Nick Hammond*

---

## Storehouse Foodbank

Storehouse Foodbank is a compassion ministry run by Stour Valley Vineyard Church with the aim of helping local families and individuals in crisis. The volunteers will be busy in the run up to Christmas and ask that any donations of seasonal foodstuffs be made by 10th December to give time for the items to be sorted and packed. There are donation points at Sudbury branches of Tesco, Waitrose and Sainsburys and at East of England Co-op shops in Great Cornard, Lavenham and Long Melford. More information including a list of the most needed items can be found at <https://stourvalleyvineyard.org/storehouse/>



**Sudbury  
Physiotherapy Centre**  
& Complementary Health

- Musculoskeletal
- Neuro-Physiotherapy
- Sports Massage
- Chiropody
- Podiatry
- Pilates
- Shiatsu
- Clinical Hypnosis
- Nutritional Therapy

**Appointments available Monday - Saturday**

**Tel:** 01787 378178 **Email:** sudburyphysio@hotmail.co.uk  
www.sudburyphysio.co.uk  
8 Cornard Road • Sudbury • CO10 2XA

# **Village Hall Available for Hire: New, well equipped kitchen**

The cost of hiring the Village Hall for a morning,  
afternoon or evening session is:

**£15 for villagers and £20 for all others.**

Tables and chairs are available for rent.

For information please contact:

Patricia Monk

Booking Secretary on 07540 783516

---

## Church Sign



This beautifully crafted wooden sign which points the way from the green lane to All Saints has been very kindly donated to the church by Patricia and Nigel Monk.

---

## Wise Words

Hope smiles from the threshold of the year to come, whispering, "It will be happier".  
*Alfred, Lord Tennyson 1809 - 1892*

---

## USEFUL CONTACTS & EMERGENCY NUMBERS

**Police, Fire, Ambulance - Emergencies**

**Phone 999**

**Police - Non emergency situation**

**Phone 101**

**NHS Direct**

**Phone 111**

**Police - Minicom users with hearing difficulties**

**01473 611160**

Sudbury Police Station, Acton Lane, Sudbury CO10 1QN

**Tel 01473 613500**

**Highways – report potholes, dangerous road defects etc.**

<https://www.suffolk.gov.uk/roads-and-transport/>

Other enquiries, 8.30 a.m.-6.00 p.m. Monday to Friday

9.00 a.m.-1.00p.m. Saturdays

**0845 606 6171**

Highways – out of hours

**01473 433444**

**Anglian Water**

[www.anglianwater.co.uk](http://www.anglianwater.co.uk)

Mains water leaks

**0800 771881**

Water supply + public sewerage emergencies

**08457 145145**

**Electricity power problems**

**105 / 0800 3163105**

**Little Cornard Parish Council website**

[www.littlecornard.onesuffolk.net](http://www.littlecornard.onesuffolk.net)

Little Cornard Village Hall -

Patricia Monk

**07540 783516**

All Saints Church Wardens -

Jeremy Apter

**01787 373439**

Brenda Pentney

**01787 227615**

---

# Feedback from James Finch

## Your County Councillor for the Stour Valley

**Tel: 01206 263649    Mobile: 07545 423796**

**Email: [james.finch@suffolk.gov.uk](mailto:james.finch@suffolk.gov.uk)**

- **COVID 19 infection rates at the end of October begin to decrease.**

There is a flattening of infection rates in South Suffolk. In the 7 days up to **31st October there were 3337 new cases of COVID-19 in the whole of Suffolk**. Locally in the area of my division, there were 33 cases up to the 7 day period ending 26th October in our MSOA area of 18 villages but in the Sudbury, Hadleigh and East Bergholt areas which surround the Stour Valley division, **their cases in the last 7 days are in the 50's** and incidences are being recorded in the younger age groups. **However, there is some good news in that the 7 day rolling average of deaths in hospitals and care homes is nil**. The Babergh District has the lowest number of incidences in the county and the trend of those infected is plateauing. **All in all, this demonstrates again that the vaccination programme is working well locally**. Booster vaccines have now started for those who were vaccinated before Christmas and up to the end of January. In addition the Flu Vaccination programme has also commenced.

*However I continue to urge all those of you who are travelling locally and mixing with more people for work and / or pleasure to take a Rapid Flow Test twice per week so that you can take precautions if you are infected unknowingly and that we can keep the good record we have locally.*

- **New Suffolk Recycling Centres online booking system**

On September 20th it was announced that Suffolk County Council has developed a new, more user-friendly booking system which enables residents to book slots for recycling.

For bookings from 27 September, people can view all available time slots in real time, to see which booking slots are free at any given moment. The system allows you to book up to seven days in advance. If circumstances change, you can easily cancel your slot up to one hour beforehand or equally, you can click to amend your booking if required.

The system is also able to advise customers on which sites accept specific materials, such as plasterboard, to ensure the correct type of booking is made to save customers' time, and it can also be used to share real time messages with customers, for example if any site needs to close due to adverse weather or emergency situations. The new booking system is connected to automated number plate recognition to allow for a trial of automatic entry gates.

- **Local Flooding**

A number of villages have suffered from flooding this last month especially in the past few weeks. I am giving this a high priority by regularly informing and pressing the Highways team to address these issues especially where this results in the internal flooding of houses. The storms at the beginning of October were particularly bad and on the morning of 5th October locally between 6.30 and 6.40, it was raining at a rate of 280 mm/hr – that is more than 10 inches per hour. This is extremely intense and challenges the capacity of any highway

---

drainage system. (My thanks to David Lowe of Nayland for this data). There was again heavy rain last week. On behalf of the Council, please accept my personal apologies to those who have suffered from local flooding. I can assure you that your challenges are high on our priority list.

- **Virtual Fostering and Adoption Sessions for the Stour Valley**

The Virtual Fostering and Adoption sessions have been reviewed and are reported to have been very successful. In light of this, it is intended to continue with these virtual sessions. Since the incidence of Covid-19 sadly the demand for this service has increased significantly.

**The Foster Carer recruitment Event is held on the 1st Wednesday of every month, and the Adoption Event is the 1st Thursday all at 7:00 pm in your home.**

To book a place please email [Claire.Gwatkin@suffolk.gov.uk](mailto:Claire.Gwatkin@suffolk.gov.uk). She will then send instructions on how to join the virtual meeting. As always, the team will be happy to answer any questions you have about fostering or adoption. They will normally have a foster carer or adoptive parent available to help you at these events. To find out more refer to the website <https://www.fosterandadopt.suffolk.gov.uk>

- **My Priorities**

*Education - Supporting Vulnerable People - Jobs and Growth - Localism and the Stour Valley - Building on Suffolk's Strength all underpinned by strong financial management and fair council tax.*

---



[www.chapellanefurniture.co.uk](http://www.chapellanefurniture.co.uk)

  @chapellanefurniture



**Handmade  
Furniture &  
Kitchens.**

Find Me:

Chapel Ln, Little Cornard, Sudbury  
CO10 0PB

Get In Touch:

☎ 07791254457

✉ [chapellanefurniture@gmail.com](mailto:chapellanefurniture@gmail.com)

---

## **All Saints Harvest Fair**

After two lockdowns and little opportunity to fundraise, we were truly blessed to have two days of good weather for the return of our Harvest Fair - and we came with a bang! Clay pigeon shooting and tractor rides were additional attractions this year and were thoroughly enjoyed by all. Lots of visitors' children were thrilled to have the chance to "drive" the big red tractor and many people enjoyed their first taste of clay pigeon shooting - under careful and helpful instructors' eyes! The dog show was a welcome return of a favourite and good fun for Saturday. On Sunday, we were delighted to play host to a wonderful selection of vintage cars, motorbikes and other vehicles. Some rare beauties were on display and much admired by all who saw them, with their enthusiastic owners only too pleased and proud to talk about them. In addition to these, there was the opportunity to listen to the bell ringers of All Saints and even to have a go at bell ringing.

The traditional favourites of art show, bric-a-brac, barbecue, plant stall and the delicious selection of home-made cakes and refreshments provided by members of the church community were very much the backbone of the event. These allowed people to pause, sit, chat and admire the lovely surroundings that our church provides. We had quite a few first-time visitors who were very complimentary about the friendly atmosphere and traditional games that they could get involved in. There were craft demonstrations to share too - truly something for everyone.

We raised in excess of £4000 which was a wonderful and much needed boost. It was in no small part due to the way members of the church community pulled together and went the extra mile to make this year such a success. Thanks go to everyone who helped in the preparation and on the day. A great team and a great Fair!

*Lucy Baker*

---

## **Flower and Cleaning Rota**

A big Thank You to everyone who has continued to help since we were able to start again following the easing of Covid-19 restrictions. Marion and I will send out a new rota for 2022. If you want to make any changes please let us know. During the interregnum we are holding services on the second and fourth Sundays of each month. We will contact everyone if this should change. All being well we will be decorating the church for Christmas in time for the Carol Service on 19th December.

Please contact Marian Turner 01787 377889 or Sue Macdiarmid 01787 375858

*Sue Macdiarmid*

---

---

# Wedding of Victoria Apter and Thomas Leeder



Victoria Apter and Thomas Leeder who were married at All Saints in September

---

## European Robin *Erithacus rubecula*

From the mid-19th century, when the sending of Christmas cards gained in popularity, the robin became strongly associated with Christmas taking a starring role on many of the cards sent and received each year. Early Victorian postmen wore brightly coloured red jackets earning themselves the nickname “robins” and it is thought that the birds symbolised the act of sending the card. The distinctive orange breast of both sexes contributed to the European robin’s original name of “redbreast” with orange as a colour unknown in English until the 16th century, by which time the fruit had been introduced. In the 15th century when it became popular to give human names to familiar species the bird came to be known as robin redbreast, which was eventually shortened to *robin*. Older English names for the bird include *ruddock* and *robinet*.





DogsTrust



# Canine Cared For

**If I pass away.  
If I receive a life-changing diagnosis.  
If I move to a care home.**

**Feel reassured with our FREE  
Canine Care Card service**

Registered charity numbers: 227523 & SC037843

**Call Paige on  
01953 497912 or email  
[paige.pope@dogstrust.org.uk](mailto:paige.pope@dogstrust.org.uk)  
for more information**



---

## **There be dragons...**

Little Cornard with its population of just two hundred and eighty six souls (2011 census) was well qualified to be included in a recent East Anglian Daily Times feature about Suffolk's smallest villages. Mentioned in the article were Little Cornard's three historic claims to fame. Starting with the earliest the village was once the site of a bloody battle which took place on Sharpfight Meadow, now known as Shalford Meadow, between the Danes and the Saxons. Sharpfight Meadow may also have been the site of a battle involving Boudicca and soldiers from the Roman garrison at Colchester.

Later, the population of the village would be decimated by bubonic plague when in 1349 it was the first community in Suffolk to report cases of what was then referred to as The Great Pestilence or The Great Mortality. The term Black Death was not used to refer to the pandemic until the mid-seventeenth century. Sixty people in Little Cornard lost their lives to the disease including twenty one families who owned land and lost all their adults.

Little Cornard's third claim to fame came just one hundred years later and is detailed in a small leather-bound book in the library of the Dean and Chapter at Canterbury and involves the mythical fight between two dragons: "Memorandum that on Friday 26th of September in the year of our Lord 1449, about the hour of Vespers, two terrible dragons were seen fighting for about the space of one hour, on two hills, of which one, in Suffolk, is called Kydyndon Hyl (Kedington Hill) and the other in Essex, Blacdon Hyl (Ballingdon Hill). One was black in colour and the other reddish and spotted. After a long conflict the reddish one obtained the victory over the black, which done, both returned into the hills above whence they had come, that is to say, each to his own place to the admiration of many beholding them." There was however, an earlier sighting of a dragon in the locality. This was in 1405 and is recorded in the *Chronica Monasterii S. Albani*. It was probably written by William Wyntershille, a monk at the Abbey of St Albans, described by his peers as "a man of great learning". His account gives a description of the dragon's appearance: "vast in body with crested head, teeth like a saw and tail extending to an enormous length". He also names a key witness, Sir Richard de Waldegrave of Smallbridge Hall.

---

## **Suffolk Historic Churches Trust**

### **Ride and Stride & Pedal and Drive**

We were blessed with a beautiful day and fifteen local riders made it to our church. Thanks to some very generous sponsorship and donations I was able to send off a cheque for £450 to the Suffolk Historic Churches Trust, half of which will come back to All Saints.

*Sue Macdiarmid*

# Babergh District Council

## Christmas & New Year Waste Collection Schedule 2021/22

	Usual Collection Date	Revised Collection Date	Change
Recycling	Monday 27th December 2021	Wednesday 29th December 2021	2 days later
	Tuesday 28th December 2021	Thursday 30th December 2021	2 days later
	Wednesday 29th December 2021	Friday 31st December 2021	2 days later
	Thursday 30th December 2021	Tuesday 4th January 2022	5 days later
	Friday 31st December 2021	Wednesday 5th January 2022	5 days later
Refuse	Monday 3rd January 2022	Thursday 6th January 2022	3 days later
	Tuesday 4th January 2022	Friday 7th January 2022	3 days later
	Wednesday 5th January 2022	Saturday 8th January 2022	3 days later
	Thursday 6th January 2022	Monday 10th January 2022	4 days later
	Friday 7th January 2022	Tuesday 11th January 2022	4 days later
Recycling	Monday 10th January 2022	Wednesday 12th January 2022	2 days later
	Tuesday 11th January 2022	Thursday 13th January 2022	2 days later
	Wednesday 12th January 2022	Friday 14th January 2022	2 days later
	Thursday 13th January 2022	Saturday 15th January 2022	2 days later
	Friday 14th January 2022	Monday 17th January 2022	3 days later
Refuse	Monday 17th January 2022	Tuesday 18th January 2022	1 day later
	Tuesday 18th January 2022	Wednesday 19th January 2022	1 day later
	Wednesday 19th January 2022	Thursday 20th January 2022	1 day later
	Thursday 20th January 2022	Friday 21st January 2022	1 day later
	Friday 21st January 2022	Saturday 22nd January 2022	1 day later

From Monday 24th January 2022 refuse and recycling collections return to the normal schedule.

**Please note:** There will be no garden waste (brown bin) collections during the weeks commencing 27th December 2021 and 3rd January 2022. Please refer to the garden waste collection schedule, which is available at: [www.babergh.gov.uk/waste-services](http://www.babergh.gov.uk/waste-services)

**Please make sure your bin is out by 6.30am on collection day**

### Waste Services

Web: [www.babergh.gov.uk/waste-services](http://www.babergh.gov.uk/waste-services)

Email: [recycling@babermidsuffolk.gov.uk](mailto:recycling@babermidsuffolk.gov.uk)

Phone: 0300 1234 000 (option 4)



# Babergh District Council

## Refuse & Recycling Collection Schedule 2022

<div>December 2021</div> <table><tr><td>Mo</td><td>Tu</td><td>We</td><td>Th</td><td>Fr</td><td>Sa</td><td>Su</td></tr><tr><td></td><td></td><td>1</td><td>2</td><td>3</td><td>4</td><td>5</td></tr><tr><td>6</td><td>7</td><td>8</td><td>9</td><td>10</td><td>11</td><td>12</td></tr><tr><td>13</td><td>14</td><td>15</td><td>16</td><td>17</td><td>18</td><td>19</td></tr><tr><td>20</td><td>21</td><td>22</td><td>23</td><td>24</td><td>25</td><td>26</td></tr><tr><td>27</td><td>28</td><td>29</td><td>30</td><td>31</td><td></td><td></td></tr></table>	Mo	Tu	We	Th	Fr	Sa	Su			1	2	3	4	5	6	7	8	9	10	11	12	13	14	15	16	17	18	19	20	21	22	23	24	25	26	27	28	29	30	31			<div>January 2022</div> <table><tr><td>Mo</td><td>Tu</td><td>We</td><td>Th</td><td>Fr</td><td>Sa</td><td>Su</td></tr><tr><td></td><td></td><td></td><td></td><td></td><td>1</td><td>2</td></tr><tr><td>3</td><td>4</td><td>5</td><td>6</td><td>7</td><td>8</td><td>9</td></tr><tr><td>10</td><td>11</td><td>12</td><td>13</td><td>14</td><td>15</td><td>16</td></tr><tr><td>17</td><td>18</td><td>19</td><td>20</td><td>21</td><td>22</td><td>23</td></tr><tr><td>24</td><td>25</td><td>26</td><td>27</td><td>28</td><td>29</td><td>30</td></tr><tr><td>31</td><td></td><td></td><td></td><td></td><td></td><td></td></tr></table>	Mo	Tu	We	Th	Fr	Sa	Su						1	2	3	4	5	6	7	8	9	10	11	12	13	14	15	16	17	18	19	20	21	22	23	24	25	26	27	28	29	30	31							<div>February 2022</div> <table><tr><td>Mo</td><td>Tu</td><td>We</td><td>Th</td><td>Fr</td><td>Sa</td><td>Su</td></tr><tr><td></td><td>1</td><td>2</td><td>3</td><td>4</td><td>5</td><td>6</td></tr><tr><td>7</td><td>8</td><td>9</td><td>10</td><td>11</td><td>12</td><td>13</td></tr><tr><td>14</td><td>15</td><td>16</td><td>17</td><td>18</td><td>19</td><td>20</td></tr><tr><td>21</td><td>22</td><td>23</td><td>24</td><td>25</td><td>26</td><td>27</td></tr><tr><td>28</td><td></td><td></td><td></td><td></td><td></td><td></td></tr></table>	Mo	Tu	We	Th	Fr	Sa	Su		1	2	3	4	5	6	7	8	9	10	11	12	13	14	15	16	17	18	19	20	21	22	23	24	25	26	27	28							<div>March 2022</div> <table><tr><td>Mo</td><td>Tu</td><td>We</td><td>Th</td><td>Fr</td><td>Sa</td><td>Su</td></tr><tr><td></td><td>1</td><td>2</td><td>3</td><td>4</td><td>5</td><td>6</td></tr><tr><td>7</td><td>8</td><td>9</td><td>10</td><td>11</td><td>12</td><td>13</td></tr><tr><td>14</td><td>15</td><td>16</td><td>17</td><td>18</td><td>19</td><td>20</td></tr><tr><td>21</td><td>22</td><td>23</td><td>24</td><td>25</td><td>26</td><td>27</td></tr><tr><td>28</td><td>29</td><td>30</td><td>31</td><td></td><td></td><td></td></tr></table>	Mo	Tu	We	Th	Fr	Sa	Su		1	2	3	4	5	6	7	8	9	10	11	12	13	14	15	16	17	18	19	20	21	22	23	24	25	26	27	28	29	30	31										
Mo	Tu	We	Th	Fr	Sa	Su																																																																																																																																																																																			
		1	2	3	4	5																																																																																																																																																																																			
6	7	8	9	10	11	12																																																																																																																																																																																			
13	14	15	16	17	18	19																																																																																																																																																																																			
20	21	22	23	24	25	26																																																																																																																																																																																			
27	28	29	30	31																																																																																																																																																																																					
Mo	Tu	We	Th	Fr	Sa	Su																																																																																																																																																																																			
					1	2																																																																																																																																																																																			
3	4	5	6	7	8	9																																																																																																																																																																																			
10	11	12	13	14	15	16																																																																																																																																																																																			
17	18	19	20	21	22	23																																																																																																																																																																																			
24	25	26	27	28	29	30																																																																																																																																																																																			
31																																																																																																																																																																																									
Mo	Tu	We	Th	Fr	Sa	Su																																																																																																																																																																																			
	1	2	3	4	5	6																																																																																																																																																																																			
7	8	9	10	11	12	13																																																																																																																																																																																			
14	15	16	17	18	19	20																																																																																																																																																																																			
21	22	23	24	25	26	27																																																																																																																																																																																			
28																																																																																																																																																																																									
Mo	Tu	We	Th	Fr	Sa	Su																																																																																																																																																																																			
	1	2	3	4	5	6																																																																																																																																																																																			
7	8	9	10	11	12	13																																																																																																																																																																																			
14	15	16	17	18	19	20																																																																																																																																																																																			
21	22	23	24	25	26	27																																																																																																																																																																																			
28	29	30	31																																																																																																																																																																																						
<div>April 2022</div> <table><tr><td>Mo</td><td>Tu</td><td>We</td><td>Th</td><td>Fr</td><td>Sa</td><td>Su</td></tr><tr><td></td><td></td><td></td><td></td><td>1</td><td>2</td><td>3</td></tr><tr><td>4</td><td>5</td><td>6</td><td>7</td><td>8</td><td>9</td><td>10</td></tr><tr><td>11</td><td>12</td><td>13</td><td>14</td><td>15</td><td>16</td><td>17</td></tr><tr><td>18</td><td>19</td><td>20</td><td>21</td><td>22</td><td>23</td><td>24</td></tr><tr><td>25</td><td>26</td><td>27</td><td>28</td><td>29</td><td>30</td><td></td></tr></table>	Mo	Tu	We	Th	Fr	Sa	Su					1	2	3	4	5	6	7	8	9	10	11	12	13	14	15	16	17	18	19	20	21	22	23	24	25	26	27	28	29	30		<div>May 2022</div> <table><tr><td>Mo</td><td>Tu</td><td>We</td><td>Th</td><td>Fr</td><td>Sa</td><td>Su</td></tr><tr><td></td><td></td><td></td><td></td><td></td><td></td><td>1</td></tr><tr><td>2</td><td>3</td><td>4</td><td>5</td><td>6</td><td>7</td><td>8</td></tr><tr><td>9</td><td>10</td><td>11</td><td>12</td><td>13</td><td>14</td><td>15</td></tr><tr><td>16</td><td>17</td><td>18</td><td>19</td><td>20</td><td>21</td><td>22</td></tr><tr><td>23</td><td>24</td><td>25</td><td>26</td><td>27</td><td>28</td><td>29</td></tr><tr><td>30</td><td>31</td><td></td><td></td><td></td><td></td><td></td></tr></table>	Mo	Tu	We	Th	Fr	Sa	Su							1	2	3	4	5	6	7	8	9	10	11	12	13	14	15	16	17	18	19	20	21	22	23	24	25	26	27	28	29	30	31						<div>June 2022</div> <table><tr><td>Mo</td><td>Tu</td><td>We</td><td>Th</td><td>Fr</td><td>Sa</td><td>Su</td></tr><tr><td></td><td>1</td><td>2*</td><td>3**</td><td>4*</td><td></td><td>5</td></tr><tr><td>6**</td><td>7</td><td>8</td><td>9</td><td>10</td><td>11</td><td>12</td></tr><tr><td>13</td><td>14</td><td>15</td><td>16</td><td>17</td><td>18</td><td>19</td></tr><tr><td>20</td><td>21</td><td>22</td><td>23</td><td>24</td><td>25</td><td>26</td></tr><tr><td>27</td><td>28</td><td>29</td><td>30</td><td></td><td></td><td></td></tr></table>	Mo	Tu	We	Th	Fr	Sa	Su		1	2*	3**	4*		5	6**	7	8	9	10	11	12	13	14	15	16	17	18	19	20	21	22	23	24	25	26	27	28	29	30				<div>July 2022</div> <table><tr><td>Mo</td><td>Tu</td><td>We</td><td>Th</td><td>Fr</td><td>Sa</td><td>Su</td></tr><tr><td></td><td></td><td></td><td></td><td></td><td>1</td><td>2</td></tr><tr><td>3</td><td>4</td><td>5</td><td>6</td><td>7</td><td>8</td><td>9</td></tr><tr><td>10</td><td>11</td><td>12</td><td>13</td><td>14</td><td>15</td><td>16</td></tr><tr><td>17</td><td>18</td><td>19</td><td>20</td><td>21</td><td>22</td><td>23</td></tr><tr><td>24</td><td>25</td><td>26</td><td>27</td><td>28</td><td>29</td><td>30</td></tr><tr><td>31</td><td></td><td></td><td></td><td></td><td></td><td></td></tr></table>	Mo	Tu	We	Th	Fr	Sa	Su						1	2	3	4	5	6	7	8	9	10	11	12	13	14	15	16	17	18	19	20	21	22	23	24	25	26	27	28	29	30	31						
Mo	Tu	We	Th	Fr	Sa	Su																																																																																																																																																																																			
				1	2	3																																																																																																																																																																																			
4	5	6	7	8	9	10																																																																																																																																																																																			
11	12	13	14	15	16	17																																																																																																																																																																																			
18	19	20	21	22	23	24																																																																																																																																																																																			
25	26	27	28	29	30																																																																																																																																																																																				
Mo	Tu	We	Th	Fr	Sa	Su																																																																																																																																																																																			
						1																																																																																																																																																																																			
2	3	4	5	6	7	8																																																																																																																																																																																			
9	10	11	12	13	14	15																																																																																																																																																																																			
16	17	18	19	20	21	22																																																																																																																																																																																			
23	24	25	26	27	28	29																																																																																																																																																																																			
30	31																																																																																																																																																																																								
Mo	Tu	We	Th	Fr	Sa	Su																																																																																																																																																																																			
	1	2*	3**	4*		5																																																																																																																																																																																			
6**	7	8	9	10	11	12																																																																																																																																																																																			
13	14	15	16	17	18	19																																																																																																																																																																																			
20	21	22	23	24	25	26																																																																																																																																																																																			
27	28	29	30																																																																																																																																																																																						
Mo	Tu	We	Th	Fr	Sa	Su																																																																																																																																																																																			
					1	2																																																																																																																																																																																			
3	4	5	6	7	8	9																																																																																																																																																																																			
10	11	12	13	14	15	16																																																																																																																																																																																			
17	18	19	20	21	22	23																																																																																																																																																																																			
24	25	26	27	28	29	30																																																																																																																																																																																			
31																																																																																																																																																																																									
<div>August 2022</div> <table><tr><td>Mo</td><td>Tu</td><td>We</td><td>Th</td><td>Fr</td><td>Sa</td><td>Su</td></tr><tr><td>1</td><td>2</td><td>3</td><td>4</td><td>5</td><td>6</td><td>7</td></tr><tr><td>8</td><td>9</td><td>10</td><td>11</td><td>12</td><td>13</td><td>14</td></tr><tr><td>15</td><td>16</td><td>17</td><td>18</td><td>19</td><td>20</td><td>21</td></tr><tr><td>22</td><td>23</td><td>24</td><td>25</td><td>26</td><td>27</td><td>28</td></tr><tr><td>29</td><td>30</td><td>31</td><td></td><td></td><td></td><td></td></tr></table>	Mo	Tu	We	Th	Fr	Sa	Su	1	2	3	4	5	6	7	8	9	10	11	12	13	14	15	16	17	18	19	20	21	22	23	24	25	26	27	28	29	30	31					<div>September 2022</div> <table><tr><td>Mo</td><td>Tu</td><td>We</td><td>Th</td><td>Fr</td><td>Sa</td><td>Su</td></tr><tr><td></td><td></td><td></td><td>1</td><td>2</td><td>3</td><td>4</td></tr><tr><td>5</td><td>6</td><td>7</td><td>8</td><td>9</td><td>10</td><td>11</td></tr><tr><td>12</td><td>13</td><td>14</td><td>15</td><td>16</td><td>17</td><td>18</td></tr><tr><td>19</td><td>20</td><td>21</td><td>22</td><td>23</td><td>24</td><td>25</td></tr><tr><td>26</td><td>27</td><td>28</td><td>29</td><td>30</td><td></td><td></td></tr></table>	Mo	Tu	We	Th	Fr	Sa	Su				1	2	3	4	5	6	7	8	9	10	11	12	13	14	15	16	17	18	19	20	21	22	23	24	25	26	27	28	29	30			<div>October 2022</div> <table><tr><td>Mo</td><td>Tu</td><td>We</td><td>Th</td><td>Fr</td><td>Sa</td><td>Su</td></tr><tr><td></td><td></td><td></td><td></td><td></td><td></td><td>1</td></tr><tr><td>2</td><td>3</td><td>4</td><td>5</td><td>6</td><td>7</td><td>8</td></tr><tr><td>9</td><td>10</td><td>11</td><td>12</td><td>13</td><td>14</td><td>15</td></tr><tr><td>16</td><td>17</td><td>18</td><td>19</td><td>20</td><td>21</td><td>22</td></tr><tr><td>23</td><td>24</td><td>25</td><td>26</td><td>27</td><td>28</td><td>29</td></tr><tr><td>30</td><td>31</td><td></td><td></td><td></td><td></td><td></td></tr></table>	Mo	Tu	We	Th	Fr	Sa	Su							1	2	3	4	5	6	7	8	9	10	11	12	13	14	15	16	17	18	19	20	21	22	23	24	25	26	27	28	29	30	31						<div>November 2022</div> <table><tr><td>Mo</td><td>Tu</td><td>We</td><td>Th</td><td>Fr</td><td>Sa</td><td>Su</td></tr><tr><td></td><td>1</td><td>2</td><td>3</td><td>4</td><td>5</td><td>6</td></tr><tr><td>7</td><td>8</td><td>9</td><td>10</td><td>11</td><td>12</td><td>13</td></tr><tr><td>14</td><td>15</td><td>16</td><td>17</td><td>18</td><td>19</td><td>20</td></tr><tr><td>21</td><td>22</td><td>23</td><td>24</td><td>25</td><td>26</td><td>27</td></tr><tr><td>28</td><td>29</td><td>30</td><td></td><td></td><td></td><td></td></tr></table>	Mo	Tu	We	Th	Fr	Sa	Su		1	2	3	4	5	6	7	8	9	10	11	12	13	14	15	16	17	18	19	20	21	22	23	24	25	26	27	28	29	30											
Mo	Tu	We	Th	Fr	Sa	Su																																																																																																																																																																																			
1	2	3	4	5	6	7																																																																																																																																																																																			
8	9	10	11	12	13	14																																																																																																																																																																																			
15	16	17	18	19	20	21																																																																																																																																																																																			
22	23	24	25	26	27	28																																																																																																																																																																																			
29	30	31																																																																																																																																																																																							
Mo	Tu	We	Th	Fr	Sa	Su																																																																																																																																																																																			
			1	2	3	4																																																																																																																																																																																			
5	6	7	8	9	10	11																																																																																																																																																																																			
12	13	14	15	16	17	18																																																																																																																																																																																			
19	20	21	22	23	24	25																																																																																																																																																																																			
26	27	28	29	30																																																																																																																																																																																					
Mo	Tu	We	Th	Fr	Sa	Su																																																																																																																																																																																			
						1																																																																																																																																																																																			
2	3	4	5	6	7	8																																																																																																																																																																																			
9	10	11	12	13	14	15																																																																																																																																																																																			
16	17	18	19	20	21	22																																																																																																																																																																																			
23	24	25	26	27	28	29																																																																																																																																																																																			
30	31																																																																																																																																																																																								
Mo	Tu	We	Th	Fr	Sa	Su																																																																																																																																																																																			
	1	2	3	4	5	6																																																																																																																																																																																			
7	8	9	10	11	12	13																																																																																																																																																																																			
14	15	16	17	18	19	20																																																																																																																																																																																			
21	22	23	24	25	26	27																																																																																																																																																																																			
28	29	30																																																																																																																																																																																							



Refuse (general rubbish) collection week



Recycling collection week



Please refer to the Christmas & New Year Waste Collection Schedule 2021/22



Collections following a bank holiday will be a day later than usual for the rest of the week

*All refuse collections during the week commencing 6th June will take place a day later than usual*

*\* Recycling collections for Thursday 2nd June will take place on Saturday 4th June instead*

*\*\* Recycling collections for Friday 3rd June will take place on Monday 6th June instead*

**Please make sure your bin is out by 6.30am on collection day**

### Waste Services

Web: [www.babergh.gov.uk/waste-services](http://www.babergh.gov.uk/waste-services)

Email: [recycling@babermidsuffolk.gov.uk](mailto:recycling@babermidsuffolk.gov.uk)

Phone: 0300 1234 000 (option 4)





# REBECCA WALLMAN

## GARDEN DESIGN

Creating beautiful spaces for a better environment.

Garden Design, Planting Design, and Garden Consultation in  
Suffolk, Essex, and beyond.

Do you dream of a sleek new entertaining space? Does your garden lack seasonal interest? Are your borders looking tired? Perhaps you have lots of ideas but no idea where to start.

We believe that every outside space has the potential to enhance your everyday environment, as well as contributing to the health of the planet. We create plant-filled gardens in a range of styles to provide habitats for wildlife, and beautiful views for you throughout the seasons.

We appreciate the difference that even some container planting or editing of a current border can make so whether you are looking for a full redesign, some planting changes, or design or horticultural advice, please get in touch to start your garden journey today.

Tel: 01787 583767    Mob: 07940 485152

Email: [rebecca@rebeccawallmangardendesign.co.uk](mailto:rebecca@rebeccawallmangardendesign.co.uk)

[www.rebeccawallmangardendesign.co.uk](http://www.rebeccawallmangardendesign.co.uk)



---

## **Little Cornard Conservation Society and History Group**

The last time I wrote for the magazine we were looking for a new Chairman and Secretary as the current incumbents are moving away. Sad to say, the posts have not been filled.

The Committee had therefore decided, with heavy hearts, that it may be time to disband the Society. A meeting of the members of the Society was held on the 23rd September to consider and vote on the proposal to disband and after discussion the members voted and approved the proposal to close the Society.

The History Group is looking for ways of disposing of the artefacts and other materials they hold so that they will still be available for study and use. If anyone can suggest possible suitable homes Rosemarie Balls (tufts1@btinternet.co.uk or tel. 01787 376639) would be delighted to hear from them.

We are sure that in time of need a new generation of residents will rise to counteract threats to the environment that they love, just as happened in 1976 when our environment was threatened by an ever expanding Great Cornard, the loss of trees and the wholesale destruction of hedgerows.

*Tina Cutts*

---

## **MiniDigging.com**

**We provide a mini digger and driver service all in one convenient package. We specialise in digging driveways, patios, footings, drainage, swimming pools, ponds and any other groundwork that needs excavating. We now can provide a garden clearing and waste disposal service. Offered is an end-to-end experience that includes seamless communication, aiming for works to run smoothly for our customers to provide a no-hassle experience.**

**We are a family run business based in Little Cornard with over 35 years experience within the construction industry, 25 of which have been specialising in small and large scale groundworks. We know what our customers expect having spent many years managing groundwork projects.**

**Tel: 07498 838872**

**Email: jon@minidigging.com**

**Web: www.minidigging.com**

**MiniDigging.com**



---

## News from Cornard Mere

Despite long periods of dry weather during the summer months the central body of water at Cornard Mere has not completely dried up. One afternoon in late September I witnessed, from the cover of the reedbed, a flock of over thirty Canada Geese crammed onto the remains of this shallow pool while a Green Sandpiper strutted across the wide expanse of surrounding exposed peat. There is always a



chance of spotting one of these charming small wading birds at this time of year but, normally, I only glimpse the distinctive white rump as it swiftly departs over a screen of willows. By the following week a small advanced party of Teal had arrived to spend the winter on the reserve. The mild temperatures have continued into the middle of October and encouraged a young Grass Snake to traverse the public footpath during my weekly trimming of the overhanging vegetation. The roadside entrance has been mown and raked and a visit from the Dedham Vale and Stour Valley Project volunteers is expected. The Weeping Willow next to the bungalow will soon be shedding its leaves and revealing its bunches of Mistletoe in time for Christmas (see photo). Finally, Work Parties are held on the first Sunday of each month. We meet at the entrance at 10.00am. Volunteers will receive a very warm welcome and a guided tour. My phone number is 01787 281631.

*Robin Ford*

S.W.T. Voluntary Warden

---

## The Book Swap Shed



Enterprising Little Cornard resident Scott Savage has made and installed a Book Swap Shed which all residents are invited to use. By kind permission of Dave Porter the shed is situated outside the small holding in Upper Road. Dave, along with Graham Slaughter and Nick Crook of NJC Clearance and Collections, who gave his time and made his van available free of charge for the task, helped Scott to move the shed into position. If you have books you would be happy to donate, more are currently needed to help fill the shelves. It is hoped that the Book Swap Shed will become a well-used facility for the village.

---

---

## Three Hundred Year old Book Returned to Sheffield Cathedral

In July this year a small parcel was delivered by first class post to Sheffield Cathedral containing a small book entitled The Faith and Practice of a Church of England Man. Inside the book, which is a 1704 reprint of a 1688 edition, is a beautifully written inscription dated 1709 stating that 'this book belongs to ye lending library at Sheffield church'. Inside the book was a note explaining its owner, who had recently died, had left instructions in her will asking for it to be returned.

---

### Little Cornard Parish Councillors Contact Details:

**Clive Johnson (Chairman)**  
01787 228797

**Cheryl Crane** 01787 227273  
cheryl.crane@talk21.com

**Nick Hammond (Vice Chairman)**  
01787 227797

**Karen Gilbert** 07885 135183

**Ruth Adams** 01787 227467

**Mark Irwin** 01787 227083

**Nigel Monk** nigel.monk@svw.org.uk



***For all your carpentry and kitchen needs  
• Free quotes • No job too small***

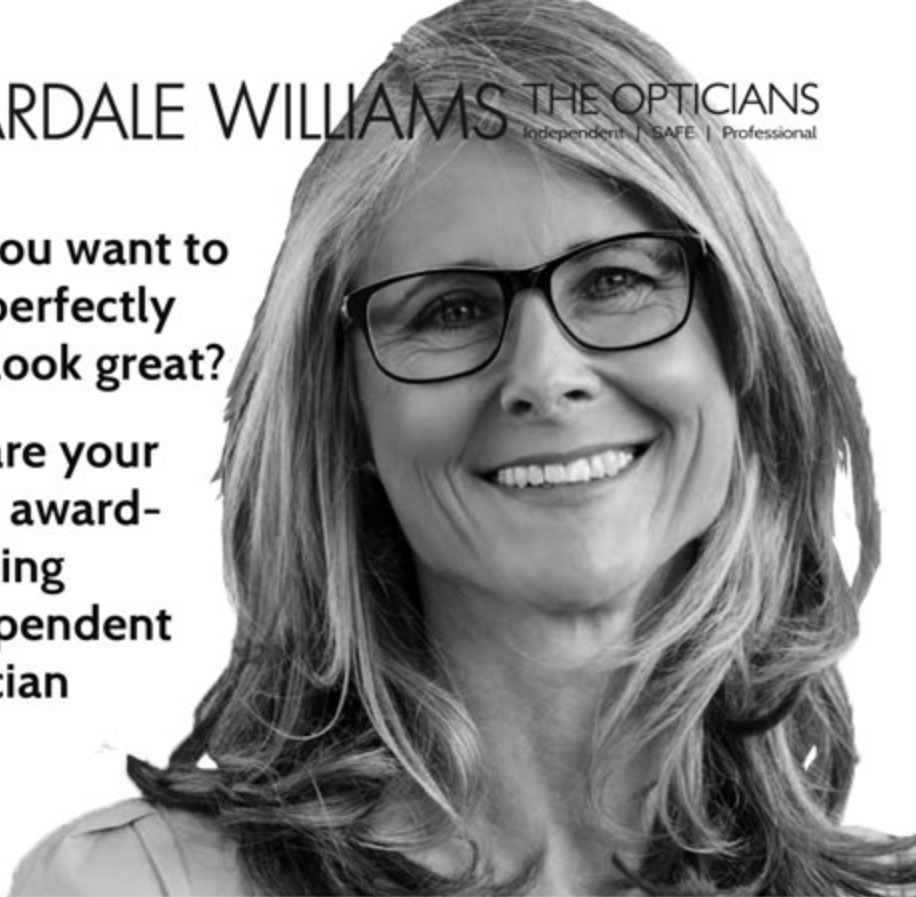
  **C.A.D Carpentry & Kitchen Installations Ltd**  
**Email: CAD@carpentryandkitchens.com**  
**Tel: 07983 693 666**

# WARDALE WILLIAMS THE OPTICIANS

Independent | SAFE | Professional

Do you want to  
see perfectly  
and look great?

We are your  
local award-  
winning  
independent  
optician



- Regulated by the NHS with strict safety standards
- Thin lens specialist so you look your best
- Risk-free varifocal guarantee
- Advanced eye health examinations with 3D OCT scanner; we can detect signs years before you notice any symptoms
- Hearing (audiology) service - FREE hearing assessments
- Contact lenses - all major brands sold
- First rate customer service - see our Google Reviews!

50 Gainsborough Street, **Sudbury** CO10 2ET 01787 372 492  
28 High Street, **Halstead** CO9 2AP 01787 472 209  
[www.wardalewilliams.co.uk](http://www.wardalewilliams.co.uk) **since 1947**



---

## **Suffolk Historic Churches Trust Ride and Stride 2021**



**Two contrasting churches in Hadleigh: the imposing Church of St Mary and the charming Row Chapel both of which Susan included in her tour.**

Susan Sills was one of the intrepid cyclists who took part in this year's event. Here is her account of her day:

The weather was kind, in fact just perfect, with little wind and a pleasant temperature.

My journey started at Assington and finished at Little Cornard with lunch at Kersey.

Rural Suffolk, especially between Stoke by Nayland and Hadleigh, was lovely with Autumn fruits and seeds in abundance in the hedges and some great views.

Polstead and Shelley have some fascinating old thatched cottages and the churches are a pleasure to visit. My furthest point was the Row Chapel in Hadleigh after which I had a good rest at Kersey munching my sandwiches.

Cross country to Sudbury was less hilly which was most welcome and then had a very interesting stop at Chilton Church which is a gem. Various Sudbury churches followed and then (oh dear!) I had to push myself and the bike up Prospect Hill to receive a lovely cup of tea and a piece of cake at Little Cornard Harvest Fair.

A most enjoyable day out and managed to raise £450 half of which will go to Little Cornard Church.

*Susan Sills*

---

## News Items you may have missed...

**Church organist** Richard Webb retired earlier this year after seventy three years of service. He started playing after Finchingfield church organist Lou Suckling asked him if he would like to learn. At the tender age of ten he had difficulty reaching the bass pedals. After four years as organist at Great Bardfield the then eighteen year old Richard went into the RAF. On his return two years later he became organist at Wethersfield church where he served from 1955 to 1959. This was followed by another eleven years at Great Bardfield before returning to Finchingfield when mentor Lou Suckling became ill and at the time of his retirement Richard had been playing there for an amazing fifty years.

**In the summer** it was reported that worshippers at Our Lady Star of the Sea church in Lowestoft were taking umbrellas to services to protect themselves from the droppings of around two hundred kittiwakes that had made their home on the tower. The church was burning more incense to cover the smell of the droppings outside.

**Experts working** on a stained glass window in preparation for a British Museum exhibition on Thomas Becket found that the pieces of glass had previously been put together in the wrong order. The window was made shortly after Becket's murder, to depict his miracles and was one of six which greeted pilgrims at his shrine at Canterbury Cathedral. Henry V111 ordered the shrine be destroyed in the 16th century and it is thought that the pieces were hastily reassembled in the wrong order when they were restored in the 1660s.

**Throughout August**, an installation of "Hope" leaves, by artist Peter Walker, lined the floor of Worcester Cathedral's Lady Chapel. According to the Cathedral's own website it was designed as a reflective memorial to the effects of the pandemic, to honour those who had lost their lives and to allow everyone to take a moment to contemplate what we have been through and to think about loved ones. The five thousand metal leaves were laid out on the Cathedral floor, creating a beautiful impression of autumn leaves fallen from the trees.

---

### **LITTLE CORNARD PARISH COUNCIL**

All meetings start at 7pm and members of the public or press may attend.

Minutes from Parish Council meetings are available on:

**[www.littlecornard.onesuffolk.net](http://www.littlecornard.onesuffolk.net)**

**Clerk - Dave Crimmin**

**Cragston, Sudbury Road, Newton, Sudbury CO10 0QH**

**01787 375085 [yourclerk@btinternet.com](mailto:yourclerk@btinternet.com)**

**Parish Council meeting dates for 2022  
to be announced.**

# SYGMA

S E C U R I T Y

**'Security Management, Fire Services and Drone Survey Specialists'**

Sygma provide the following services to both Business & Domestic customers:-

## SECURITY

- CCTV
- Access Control
- Intruder Alarms
- Perimeter Security
- Data Network Services
- Remote Monitoring
- Service and Maintenance

## FIRE

- Fire Risk Assessments
- Fire Detection Systems
- Fire Suppression Systems
- Emergency Lighting
- Service and Maintenance

## DRONES

- Thermal imaging solutions
- Building survey & inspections
- Water leak detection
- 4K Aerial filming and photography
- Promotional videos
- Area's with access issues

Call now for your **FREE** initial site survey on:

0800 043 6728

or email [info@sygmasecurity.co.uk](mailto:info@sygmasecurity.co.uk)



[www.sygmasecurity.co.uk](http://www.sygmasecurity.co.uk)

**\* Sygma Security Systems Ltd - Sygma Fire Services Ltd \***

Unit K Blois Meadow Business Centre Steeple Bumpstead Suffolk CB9 7BN



---

## Baptism of Madelyn Joanne Sara Stone



Helen and Ed Stone's daughter Madelyn Joanne Sara Stone (Maddie) was baptised at All Saints Church on July 11th 2021. As before, the upturned bell from the King George V battle ship was used as the font, a family tradition which has now seen three generations and over ten members of the family christened in it. Rev Stephen Morley led a wonderful service, including timely references to

the football European Championships, albeit sadly without singing due to Covid-19 restrictions. In the photograph Maddie is wearing a dress handmade by her great grandmother, Pauline Baker for her own daughter Sara Baker (Maddie's grandmother) when she was a little girl. Helen, Ed, Maddie and all of the Stone and Wheeler families wish to extend their great thanks to everyone at All Saints for sharing this very special day with them and to wish Stephen all the best for his retirement.

*Helen Stone*

---

## Little Cornard Community Speed Watch Update

The Little Cornard Community Speed Watch team are continuing to carry out twice weekly surveys along the Bures Road at Willowmere and Henny View. We continue to record an average of twenty drivers within a one hour period who are exceeding the 30 mph limit on this stretch of road. We should soon receive the most recent data from the speed indicator device that is moved between three locations. We hope this detailed information will continue to show that although the busy rush hours have a high number of speeding vehicles, the quieter times of the day are showing an improvement in the average speeds of drivers.

The results of our surveys are sent to the central CSW police team in Lowestoft and they have recently started to send us feedback for all the CSW teams in Suffolk. At present Little Cornard is recording the second highest number of speeding vehicles within a one month period although some teams may not be carrying out surveys twice a week.

Please come and join us if you can. We really need your help and would appreciate any time that you could spare. We can provide on the spot training and a high visibility jacket. We look forward to hearing from you - please contact Janice Sampson on 07990 927155. Thank you.

*Janice Sampson.*

---

---

# Little Cornard Parish Council's Christmas Message

Little Cornard Parish Council would like to wish the whole village a Happy Festive Season. We welcome in 2022 with all the hope that a new year brings. Wishing you peace, goodwill and happiness in the New Year.

---

## Who's Who in our Parish [www.littlecornardchurch.org.uk](http://www.littlecornardchurch.org.uk)

<b>Church Office:</b>	07883 809625 - <a href="mailto:office@parishchurch.co.uk">office@parishchurch.co.uk</a>	
<b>Clergy:</b>	Reverend Mary Cantacuzene	227616
	Reverend Simon White	07572 418555
<b>Readers:</b>	Murray Emerson	269073
	John Symons	211534
	Andrew Clift	227648
<b>Lay Elders:</b>	Sylvia Gaspar	01206 240591
	Sue Emerson	269073
	Carol Barnham	228417
	Sarah Pryor	227518
	Sue Ryman	227715
	Andrea Carter	228081
	Jenny Wright	227750
<b>Church Wardens:</b>	Jeremy Apter	373439
	Brenda Pentney	227615
<b>Parochial Church Council:</b>	Lucy Baker, Paul Baker, Rosemary Bullen, Phyllida Hallidie, Clare Lodge, Sue Macdiarmid, Patricia Monk, Marian Turner	
<b>PCC Secretary &amp; Electoral Roll:</b>	Clare Lodge	312494
<b>Treasurer:</b>	Paul Baker	07929 005620
<b>Gift Aid Secretary:</b>	Patricia Monk	227614
<b>Deanery Synod Reps:</b>	Clare Lodge, Jeremy Apter	
<b>Church Flowers &amp; Cleaning:</b>	Sue Macdiarmid, Marian Turner	

---

---

## The Bell Tower Report

Our band is now fully returned to practice on Wednesday evenings.

Pauline Brown the local Guild chairperson and David Lee from Bures are kindly helping us with this. Tower Captain Derek Rose has been unwell but is now on the road to recovery. He hopes to join us soon and we all look forward to seeing him.

Since Covid-19 restrictions were eased we have rung for a few Church services and, on a perfect September day, for the wedding of Victoria Apter and Thomas Leeder.

There was a really good turnout for the Harvest Fair days when we offered the opportunity to "have a go" at bell ringing and over thirty people tried it. We received several "Thank yous" for ringing at the Harvest Fair as it gave the event "a lovely village feel" to quote a couple of our visitors.

We are hopeful that a few of those who enjoyed it, or anyone else who would like to learn, will come and join us at our regular practice on Wednesday evenings at 7.30 p.m. You will be welcomed and treated with care as you learn. You do not have to be a regular church goer to take part. Tea and cakes follow practice to restore any lost calories! It is a very social hobby so do come and see how you like it and join us at practice. The Guilds run training courses, social events, and visits to other towers so you will find new friends.

The Suffolk Guild AGM for the South West region is to be held here at All Saints on Saturday November 27th. We will be ringing during the afternoon with many visiting ringers also taking part. It is hoped that the few Little Cornard ringers who are not already members will be elected to membership of the Guild on that day.

Christmas is looming up. We will be ringing for the Carol Service on Sunday 19th December and probably for other local events around Christmas time.

With very best wishes for a healthy and happy Christmas and New Year to you all.

*Gerald Bird*

---

### MAGAZINE CONTRIBUTIONS

If you have any matter of interest or news item you would like included in the next issue of the Little Cornard Magazine, please contact:-

**Rosemary Bullen**

**bullenrosemary@gmail.com • Tel: 01787 379890**

**All material for the Easter 2022 magazine to be  
received by Tuesday 1st March**

This is the Little Cornard Magazine which reports on all areas of interest in the parish. The Parish Council and the Village Hall Committee assist the Church with the finance of this magazine.

# Tree Surgeon



Blake Tree Care 

**M: 07515 288736**

**O: 01787 228341**

**[info@blaketreecare.co.uk](mailto:info@blaketreecare.co.uk)**

**[www.blaketreecare.co.uk](http://www.blaketreecare.co.uk)**

Providing excellence in;

Tree Felling - Canopy Reduction - Hedge Cutting

Tree Shaping and pruning - Stump Grinding

Pollarding - Emergency Storm Damage

*Free Consultation for Small and Large Jobs*

*Public Liability Insurance*



See our reviews on facebook  
Blake Tree Care Tree Surgeon

## ALB-Framing

**If your picture needs framing,  
we can do it!**

We're members of the *Fine Art Trade Guild* who themselves created the standards and guidelines for professional art framing together with picture printing. We continually work to these requirements.

Home or office visits are available. Following discussions about your requirements, in situ you'll see the various framing options.

**07769 858076**

[www.alb-framing.com](http://www.alb-framing.com)

[info@alb-framing.com](mailto:info@alb-framing.com)



## BORDER ROOFING

TONY BUCK - BOB BUCK

Tel/Fax 01787 374920

Mobile: 0797 0668002

## TONY GODDARD

**PAINTING & DECORATING  
INTERIOR & EXTERIOR**

**For FREE QUOTATION**

**Telephone: 01787 312015**

Email: [tony\\_goddard@hotmail.com](mailto:tony_goddard@hotmail.com)

## Barrett-Lee

*Main Dealer Service at Independent Prices*

- Dealer Level Servicing
- Full Repair Facilities
- Warranties are Safe
- Full Diagnostics
- Power Upgrades
- Air Conditioning
- Class IV MOT Tests
- Tyres Supplied & Fitted
- **FREE** Courtesy Cars



**SEE WEBSITE FOR DETAILS & OFFERS**

**[www.barrett-lee.co.uk](http://www.barrett-lee.co.uk)**

**01787 370774**

**Unit 4, Byford Road, Sudbury CO10 2YG**



**WOODERSON  
FINANCIAL**

**Mortgage Adviser • Life Insurance  
Private Medical Insurance**

**01787 379000**

[www.woodersonfinancial.co.uk](http://www.woodersonfinancial.co.uk)